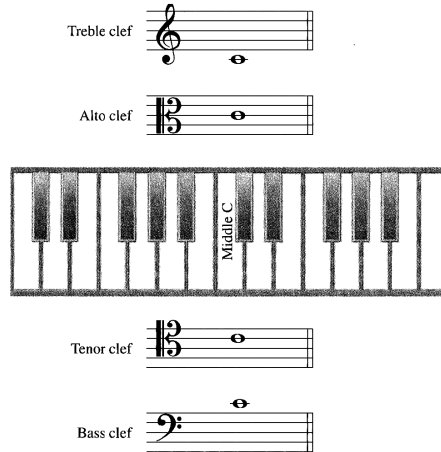


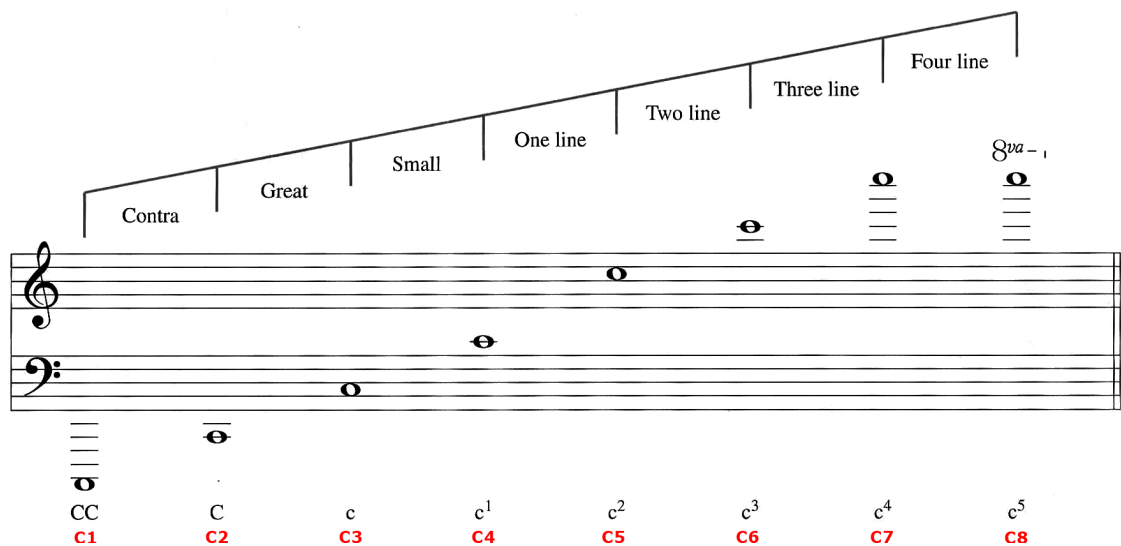
PITCH

= ear's response to regular vibrations of materials, transmitted through air.

- notated on a 5 line (4 spaces) staff, numbered from the bottom up
- the staff can be extended using ledger lines
- four clefs are still in use:



- pitches are grouped by octaves, where Middle C is either One-line C (or C4-according to MIDI standard)



ACCIDENTALS

- Flat, Sharp, Natural, Double Flat, Double Sharp



- Whole step, Half step
- Diatonic and Chromatic half steps
- Enharmonic equivalents