

Alex Danson

# **Dishwater Installation In Three Easy Steps**

for 5 Performers and Conductor

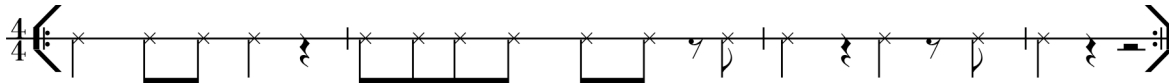
# Dishwasher Installation In Three Easy Steps

For Five performers and Conductor

by Alex Danson

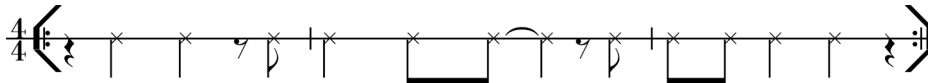
PARTS (repeat as necessary and keep the *Tempo* constant and synchronized with the others):

1.



Flush wa - ter line pri - or to con - nect - ing to clean out deb - ris.

2.



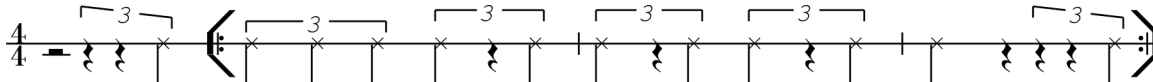
Push cord set plug through hole in cab - i - net door

3.



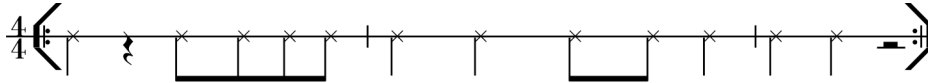
Con - nect a drain hose to the drain hole us - ing a hose clamp.

4.



Re - move and dis - card four slot - ted hex - head screws. Re -

5.



Plug cord - set in to three - prong ground - ing type out - let.

CODA (to be read only once, as fast and loud as possible):

*Attention! These instructions are not indented to assist in dishwasher installation. Neither the performers or the composer will be held liable for any damage caused by following these instructions. Do not use in conjunction with other medication without first asking your physician. If pregnant or breast-feeding, taking more than the recommended dose can cause serious health problems. Additional information about the enforcement of the CSRA might be found from OPM web site, from OSC at 202-653-7188 or from MSPB at [www.mspb.gov](http://www.mspb.gov). Caution: the packaging of this product contains natural rubber latex, which may cause allergic reaction.*

---

## INSTRUCTIONS

All parts are spoken. The piece will be performed at about 144BPM.

The Conductor will cue in the Performers one by one, at own will, after which the Performers will continue to repeat their parts in a measured and synchronized mode.

The Conductor might determine the dynamics of individual parts by signaling changes in a regular manner.

The Performers will be first positioned in a straight line in the center of the stage. During the performance of the piece, the Conductor might signal that Performers will move in another spot on the stage or in the house.

The part will be continuously repeated at Conductor's will, until the Conductor will give signal to jump to the *Coda*, which must be started as soon as the cue is given. The *Coda* must be read as fast and as loud as possible, after which the piece is over.

Sept. 2007  
Palm Springs, California